



中国认可  
国际互认  
检测  
TESTING  
CNAS L4595

# TEST REPORT

**Applicant** : myFirst Tech Asia Pte. Ltd.

**Address** : 31 Woodlands Close, #01-22 Woodlands Horizon Singapore 737855

**Report on the submitted samples said to be:**

**Sample Name(s)** : myFirst Fone M1

**Trade Mark** : myFirst

**Tested Model No.** : KW1602

**Sample Received Date** : February 21, 2025

**Testing Period** : February 21, 2025 ~ March 05, 2025  
March 10, 2025 ~ March 12, 2025

**Date of Report** : March 12, 2025

**Testing Location** : 901, No.40 Building, Xialang Industrial Zone, Heshuikou Community,  
Matian Street, Guangming District, Shenzhen, Guangdong, China

**Results** : Please refer to next page(s).

TEST REQUEST	CONCLUSION
As specified by client, based on the performed tests on submitted sample, the result of Lead(Pb), Cadmium(Cd), Mercury(Hg), Hexavalent Chromium(Cr(VI)), PBBs, PBDEs, Dibutyl Phthalate(DBP), Butylbenzyl Phthalate(BBP), Di-2-ethylhexyl Phthalate(DEHP) and Diisobutyl phthalate(DIBP) content comply with the limits set by RoHS Directive 2011/65/EU with amendment (EU) 2015/863.	PASS

Signed for and on behalf of LCS

Terry Luo

TRF-4-R-027 A/0



Shenzhen LCS Compliance Testing Laboratory Ltd.  
Add: 901, No.40 Building, Xialang Industrial Zone, Heshuikou Community, Matian Street, Guangming District,  
Shenzhen, Guangdong, China  
Tel: +(86) 0755-82591330 | E-mail: webmaster@lcs-cert.com | Web: www.lcs-cert.com  
Scan code to check authenticity

**A. EU RoHS Directive 2011/65/EU and its amendment directives**

Test method: Refer to IEC 62321-3-1:2013, Screening by X-ray Fluorescence Spectroscopy (XRF).

Test result(s):

Sample No.	Sample Description	Screening Result(s)						Date of sample submission/ Resubmission
		Cd	Pb	Hg	Cr▼	Br▼		
						PBBs	PBDEs	
1	Silver metal needle	BL	BL	BL	X	/	/	2025-02-21
2	Blue soft plastic	BL	BL	BL	BL	BL	BL	2025-02-21
3	Blue soft plastic buckle	BL	BL	BL	BL	BL	BL	2025-02-21
4	Silver metal needle	X	X	BL	X	/	/	2025-02-21
5	White plastic	BL	BL	BL	BL	BL	BL	2025-02-21
6	Blue plastic shell	BL	BL	BL	BL	BL	BL	2025-02-21
7	Golden metal needle	OL	BL	BL	X	/	/	2025-02-21
8	Silver magnet	OL	BL	BL	BL	/	/	2025-02-21
9	Transparent glass	BL	BL	BL	BL	BL	BL	2025-02-21
10	Silver glass	BL	BL	BL	BL	BL	BL	2025-02-21
11	Black adhesive tape	BL	BL	BL	BL	BL	BL	2025-03-10
12	Black plastic	BL	BL	BL	BL	BL	BL	2025-03-10
13	Golden metal needle	OL	OL	BL	BL	/	/	2025-02-21
14	Golden ribbon cable	BL	BL	BL	BL	BL	BL	2025-02-21
15	Black ribbon cable	BL	BL	BL	BL	BL	BL	2025-02-21
16	Grey adhesive tape	BL	BL	BL	BL	BL	BL	2025-02-21
17	White plastic	BL	BL	BL	BL	BL	BL	2025-02-21
18	Silver metal sheet	OL	BL	BL	BL	/	/	2025-02-21
19	Silver metal sheet	BL	BL	BL	BL	/	/	2025-02-21
20	Silver metal magnet	BL	X	BL	BL	/	/	2025-02-21
21	Silver metal frame	OL	BL	BL	X	/	/	2025-02-21
22	Golden metal wire	BL	BL	BL	BL	/	/	2025-02-21
23	Transparent plastic film	BL	BL	BL	BL	BL	BL	2025-02-21
24	Black adhesive tape	BL	BL	BL	BL	BL	BL	2025-02-21
25	Silver gray metal sheet	OL	BL	BL	BL	/	/	2025-02-21
26	Black ribbon cable	BL	BL	BL	BL	BL	BL	2025-02-21
27	Black plastic shell	BL	BL	BL	BL	BL	BL	2025-02-21
28	Black plastic ring	BL	BL	BL	BL	BL	BL	2025-02-21
29	Transparent glass	BL	BL	BL	BL	BL	BL	2025-02-21

TRF-4-R-027 A/0



Shenzhen LCS Compliance Testing Laboratory Ltd.

Add: 901, No.40 Building, Xialang Industrial Zone, Heshuikou Community, Matian Street, Guangming District, Shenzhen, Guangdong, China

Tel: +(86) 0755-82591330 | E-mail: webmaster@lcs-cert.com | Web: www.lcs-cert.com

Scan code to check authenticity



Sample No.	Sample Description	Screening Result(s)						Date of sample submission/ Resubmission
		Cd	Pb	Hg	Cr▼	Br▼		
						PBBs	PBDEs	
30	Silver metal sheet	BL	OL	BL	X	/	/	2025-02-21
31	Silver metal	BL	BL	BL	BL	/	/	2025-02-21
32	Red plastic wire cover	BL	BL	BL	BL	BL	BL	2025-02-21
33	Silver metal wire	OL	X	BL	BL	/	/	2025-02-21
34	Blue plastic wire cover	BL	BL	BL	BL	X	X	2025-02-21
35	Silver gray metal sheet	BL	OL	BL	X	/	/	2025-02-21
36	Black diode	BL	BL	BL	BL	BL	BL	2025-02-21
37	Grey diode	BL	BL	BL	BL	BL	BL	2025-02-21
38	Black plastic sheet	BL	BL	BL	BL	BL	BL	2025-02-21
39	Silver gray metal sheet	OL	X	BL	X	/	/	2025-02-21
40	Pcb board	BL	BL	BL	X	X	X	2025-02-21
41	Black IC	BL	BL	BL	BL	BL	BL	2025-02-21
42	Solder	BL	BL	BL	BL	/	/	2025-02-21
43	Black IC	BL	BL	BL	BL	BL	BL	2025-02-21
44	Silver crystal oscillator	OL	BL	BL	BL	/	/	2025-02-21
45	Black IC	BL	BL	BL	BL	BL	BL	2025-02-21
46	Silver metal screw	BL	X	BL	X	/	/	2025-02-21

Note:

- Results were obtained by XRF for primary screening, and further chemical testing by ICP(for Cd, Pb, Hg), UV-Vis(for Cr(VI)) and GC-MS(for PBBs, PBDEs) are recommended to be performed, if the concentration exceeds the below warning value according to IEC 62321-3-1:2013(Unit: mg/kg).

Element	Polymers	Metals	Composite material
Cd	$BL \leq (70-3\sigma) < X < (130+3\sigma) \leq OL$	$BL \leq (70-3\sigma) < X < (130+3\sigma) \leq OL$	$LOD < X < (150+3\sigma) \leq OL$
Pb	$BL \leq (700-3\sigma) < X < (1300+3\sigma) \leq OL$	$BL \leq (700-3\sigma) < X < (1300+3\sigma) \leq OL$	$BL \leq (500-3\sigma) < X < (1500+3\sigma) \leq OL$
Hg	$BL \leq (700-3\sigma) < X < (1300+3\sigma) \leq OL$	$BL \leq (700-3\sigma) < X < (1300+3\sigma) \leq OL$	$BL \leq (500-3\sigma) < X < (1500+3\sigma) \leq OL$
Cr	$BL \leq (700-3\sigma) < X$	$BL \leq (700-3\sigma) < X$	$BL \leq (500-3\sigma) < X$
Br	$BL \leq (300-3\sigma) < X$	N/A	$BL \leq (250-3\sigma) < X$

TRF-4-R-027 A/0



Shenzhen LCS Compliance Testing Laboratory Ltd.  
Add: 901, No.40 Building, Xialang Industrial Zone, Heshuikou Community, Matian Street, Guangming District, Shenzhen, Guangdong, China  
Tel: +(86) 0755-82591330 | E-mail: webmaster@lcs-cert.com | Web: www.lcs-cert.com  
Scan code to check authenticity



## Remark:

- BL= Below Limit
  - OL= Over Limit
  - X= The range of needing to do further testing
  - $3\sigma$ = The reproducibility of analytical instruments
  - N/A= Not applicable
  - LOD= Detection limit
2. The XRF screening test for RoHS elements – The reading may be different to the actual content in the sample be of non-uniformity composition.
  3. The maximum permissible limit is quoted from the document RoHS Directive 2011/65/EU with amendment (EU) 2015/863.
  4. ▼=For restricted substances PBBs and PBDEs, the results show the total Br content, the restricted substance was Cr(VI), and the results showed the total Cr content.

RoHS Restricted Substances	Maximum Concentration Value (mg/kg) (by weight in homogenous materials)
Cadmium(Cd)	100
Lead(Pb)	1000
Mercury(Hg)	1000
Hexavalent Chromium(Cr(VI))	1000
Polybrominated biphenyls(PBBs)	1000
Polybrominated diphenylethers(PBDEs)	1000
Dibutyl Phthalate(DBP)	1000
Butylbenzyl Phthalate(BBP)	1000
Di-(2-ethylhexyl) Phthalate(DEHP)	1000
Diisobutyl phthalate(DIBP)	1000

## Disclaimers:

This XRF Screening report is for reference purposes only. The applicant shall make its/his/her own judgment as to whether the information provided in this XRF screening report is sufficient for its/his/her purposes. The result shown in this XRF screening report will differ based on various factors, including but not limited to, the sample size, thickness, area, surface flatness, equipment parameters and matrix effect (e.g. plastic, rubber, metal, glass, ceramic etc.). Further wet chemical pre-treatment with relevant chemical equipment analysis are required to obtain quantitative data.



**B. EU RoHS Directive 2011/65/EU with amendment (EU) 2015/863 on Lead(Pb), Cadmium(Cd), Hexavalent Chromium(Cr(VI)), PBBs, PBDEs, DBP, BBP, DEHP & DIBP content**

Test method:

Lead(Pb) & Cadmium(Cd) Content:

Refer to IEC 62321-5:2013, by acid digestion and analysis was performed by inductively coupled plasma optical emission spectrometer (ICP-OES) or atomic absorption spectrometer (AAS).

Hexavalent Chromium(Cr(VI)) Content:

Refer to IEC 62321-7-1:2015 or IEC 62321-7-2:2017, analysis was performed by UV-visible spectrophotometer (UV-Vis).

PBBs & PBDEs Content:

Refer to IEC 62321-6:2015, by solvent extraction and analysis was performed by gas chromatography-mass spectrometer (GC-MS).

Phthalates(DBP, BBP, DEHP & DIBP) Content:

Refer to IEC 62321-8:2017, by solvent extraction and analysis was performed by gas chromatography-mass spectrometer (GC-MS).

Test result(s):

**1) Lead(Pb) & Cadmium(Cd)**

Tested Item	MDL (mg/kg)	Test Result(s) (mg/kg)								Limit (mg/kg)
		(4)	(13)	(20)	(30)	(33)	(35)	(39)	(46)	
Lead(Pb) Content	5	N.D.	N.D.	N.D.	N.D.	N.D.	N.D.	N.D.	N.D.	1000

Tested Item	MDL (mg/kg)	Test Result(s) (mg/kg)					Limit (mg/kg)
		(4)	(7)	(8)	(13)	(18)	
Cadmium(Cd) Content	5	N.D.	N.D.	N.D.	N.D.	N.D.	100

Tested Item	MDL (mg/kg)	Test Result(s) (mg/kg)					Limit (mg/kg)
		(21)	(25)	(33)	(39)	(44)	
Cadmium(Cd) Content	5	N.D.	N.D.	N.D.	N.D.	N.D.	100

**2) Hexavalent Chromium(Cr(VI))**

Tested Item	MDL (mg/kg)	Test Result(s) (mg/kg)	Limit (mg/kg)
		(40)	
Hexavalent Chromium(Cr(VI)) Content	8	N.D.	1000

TRF-4-R-027 A/0



Shenzhen LCS Compliance Testing Laboratory Ltd.  
Add: 901, No.40 Building, Xialang Industrial Zone, Heshuikou Community, Matian Street, Guangming District, Shenzhen, Guangdong, China  
Tel: +(86) 0755-82591330 | E-mail: webmaster@lcs-cert.com | Web: www.lcs-cert.com  
Scan code to check authenticity



**3) Hexavalent Chromium(Cr(VI))(for coating on metal- water-extraction\*\*)**

Tested Item	MDL ( $\mu\text{g}/\text{cm}^2$ )	Test Result(s)			
		(1)	(4)	(7)	(21)
Hexavalent Chromium(Cr(VI)) Content★	0.10 (LOQ)	Negative	Negative	Negative	Negative

Tested Item	MDL ( $\mu\text{g}/\text{cm}^2$ )	Test Result(s)			
		(30)	(35)	(39)	(46)
Hexavalent Chromium(Cr(VI)) Content★	0.10 (LOQ)	Negative	Negative	Negative	Negative

**4) Phthalates(DBP, BBP, DEHP &DIBP)**

Tested Item(s)	MDL (mg/kg)	Test Result(s) (mg/kg)				Limit (mg/kg)
		2	3	32	34	
Dibutyl Phthalate(DBP) Content	50	N.D.	N.D.	N.D.	N.D.	1000
Butylbenzyl Phthalate(BBP) Content	50	N.D.	N.D.	N.D.	N.D.	1000
Di-(2-ethylhexyl) Phthalate(DEHP) Content	50	N.D.	N.D.	N.D.	N.D.	1000
Diisobutyl phthalate(DIBP) Content	50	N.D.	N.D.	N.D.	N.D.	1000

Tested Item(s)	MDL (mg/kg)	Test Result(s) (mg/kg)				Limit (mg/kg)
		5	6	9	10	
Dibutyl Phthalate(DBP) Content	50	N.D.	N.D.	N.D.	N.D.	1000
Butylbenzyl Phthalate(BBP) Content	50	N.D.	N.D.	N.D.	N.D.	1000
Di-(2-ethylhexyl) Phthalate(DEHP) Content	50	N.D.	N.D.	N.D.	N.D.	1000
Diisobutyl phthalate(DIBP) Content	50	N.D.	N.D.	N.D.	N.D.	1000

Tested Item(s)	MDL (mg/kg)	Test Result(s) (mg/kg)		Limit (mg/kg)
		11	12	
Dibutyl Phthalate(DBP) Content	50	N.D.	N.D.	1000
Butylbenzyl Phthalate(BBP) Content	50	N.D.	N.D.	1000
Di-(2-ethylhexyl) Phthalate(DEHP) Content	50	N.D.	N.D.	1000
Diisobutyl phthalate(DIBP) Content	50	N.D.	N.D.	1000

TRF-4-R-027 A/0



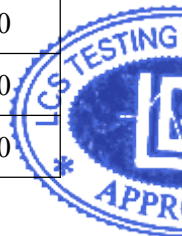
Shenzhen LCS Compliance Testing Laboratory Ltd.  
Add: 901, No.40 Building, Xialang Industrial Zone, Heshuikou Community, Matian Street, Guangming District,  
Shenzhen, Guangdong, China  
Tel: +(86) 0755-82591330 | E-mail: webmaster@lcs-cert.com | Web: www.lcs-cert.com  
Scan code to check authenticity



Tested Item(s)	MDL (mg/kg)	Test Result(s) (mg/kg)	Limit (mg/kg)
		14+15+16+17+23+24	
Dibutyl Phthalate(DBP) Content	50	N.D.	1000
Butylbenzyl Phthalate(BBP) Content	50	N.D.	1000
Di-(2-ethylhexyl) Phthalate(DEHP) Content	50	N.D.	1000
Diisobutyl phthalate(DIBP) Content	50	N.D.	1000

Tested Item(s)	MDL (mg/kg)	Test Result(s) (mg/kg)	Limit (mg/kg)
		26+27+28+29+36+37	
Dibutyl Phthalate(DBP) Content	50	N.D.	1000
Butylbenzyl Phthalate(BBP) Content	50	N.D.	1000
Di-(2-ethylhexyl) Phthalate(DEHP) Content	50	N.D.	1000
Diisobutyl phthalate(DIBP) Content	50	N.D.	1000

Tested Item(s)	MDL (mg/kg)	Test Result(s) (mg/kg)	Limit (mg/kg)
		38+40+41+43+45	
Dibutyl Phthalate(DBP) Content	50	N.D.	1000
Butylbenzyl Phthalate(BBP) Content	50	N.D.	1000
Di-(2-ethylhexyl) Phthalate(DEHP) Content	50	N.D.	1000
Diisobutyl phthalate(DIBP) Content	50	N.D.	1000



TRF-4-R-027 A/0



Shenzhen LCS Compliance Testing Laboratory Ltd.  
Add: 901, No.40 Building, Xialang Industrial Zone, Heshuikou Community, Matian Street, Guangming District,  
Shenzhen, Guangdong, China  
Tel: +(86) 0755-82591330 | E-mail: webmaster@lcs-cert.com | Web: www.lcs-cert.com  
Scan code to check authenticity

**5) Polybrominated Biphenyls(PBBs) & Polybrominated Diphenyl Ethers(PBDEs)**

Tested Item(s)	MDL (mg/kg)	Test Result(s) (mg/kg)		Limit (mg/kg)
		34	40	
Polybrominated Biphenyls(PBBs) Content				
Monobromobiphenyl	5	N.D.	N.D.	/
Dibromobiphenyl	5	N.D.	N.D.	/
Tribromobiphenyl	5	N.D.	N.D.	/
Tetrabromobiphenyl	5	N.D.	N.D.	/
Pentabromobiphenyl	5	N.D.	N.D.	/
Hexabromobiphenyl	5	N.D.	N.D.	/
Heptabromobiphenyl	5	N.D.	N.D.	/
Octabromobiphenyl	5	N.D.	N.D.	/
Nonabromodiphenyl	5	N.D.	N.D.	/
Decabromodiphenyl	5	N.D.	N.D.	/
Total content	/	N.D.	N.D.	1000
Polybrominated Diphenylethers(PBDEs) Content				
Monobromodiphenyl ether	5	N.D.	N.D.	/
Dibromodiphenyl ether	5	N.D.	N.D.	/
Tribromodiphenyl ether	5	N.D.	N.D.	/
Tetrabromodiphenyl ether	5	N.D.	N.D.	/
Pentabromodiphenyl ether	5	N.D.	N.D.	/
Hexabromodiphenyl ether	5	N.D.	N.D.	/
Heptabromodiphenyl ether	5	N.D.	N.D.	/
Octabromodiphenyl ether	5	N.D.	N.D.	/
Nonabromodiphenyl ether	5	N.D.	N.D.	/
Decabromodiphenyl ether	5	N.D.	N.D.	/
Total content	/	N.D.	N.D.	1000

TRF-4-R-027 A/0



Shenzhen LCS Compliance Testing Laboratory Ltd.  
Add: 901, No.40 Building, Xialang Industrial Zone, Heshuikou Community, Matian Street, Guangming District,  
Shenzhen, Guangdong, China  
Tel: +(86) 0755-82591330 | E-mail: webmaster@lcs-cert.com | Web: www.lcs-cert.com  
Scan code to check authenticity





## Note:

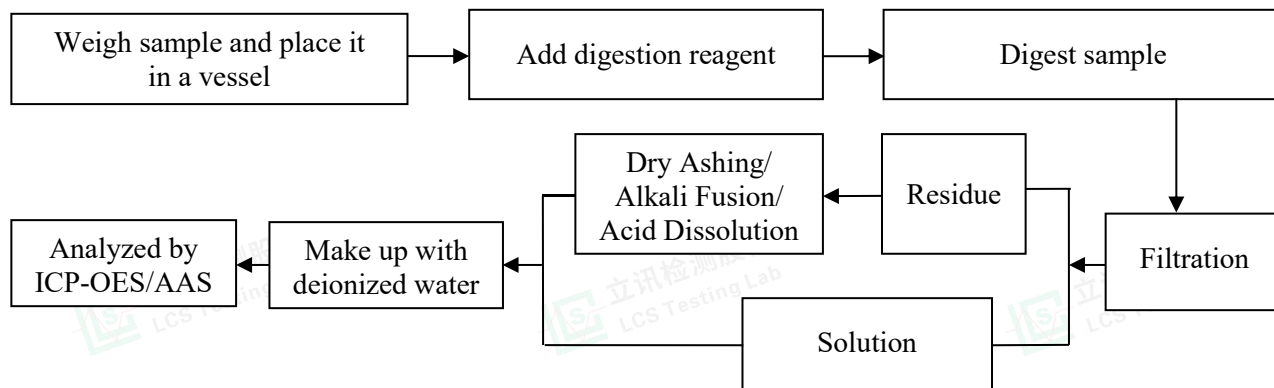
- MDL = Method Detection Limit
- N.D. = Not Detected (<MDL or LOQ)
- mg/kg= milligram per kilogram=ppm
- $\mu\text{g}/\text{cm}^2$  = micrograms per square centimeter
- LOQ = Limit Of Quantification, The LOQ of Hexavalent chromium is  $0.10 \mu\text{g}/\text{cm}^2$
- \*\*=Boiling-water-extraction:
  - ★ = a. The sample is positive for Cr(VI) if the Cr(VI) concentration is greater than  $0.13 \mu\text{g}/\text{cm}^2$ . The sample coating is considered to contain Cr(VI).
  - b. The sample is negative for Cr(VI) if Cr(VI) is N.D.(concentration less than  $0.10 \mu\text{g}/\text{cm}^2$ ). The sample coating is considered a non- Cr(VI) based coating.
  - c. The result between  $0.10 \mu\text{g}/\text{cm}^2$  and  $0.13 \mu\text{g}/\text{cm}^2$  is considered to be inconclusive, unavoidable coating variations may influence the determination.
- Information on storage conditions and production date of the tested samples is unavailable and thus Cr(VI) results represent status of the sample at the time of testing.
- According to customer's requirement, only the appointed materials have been tested.



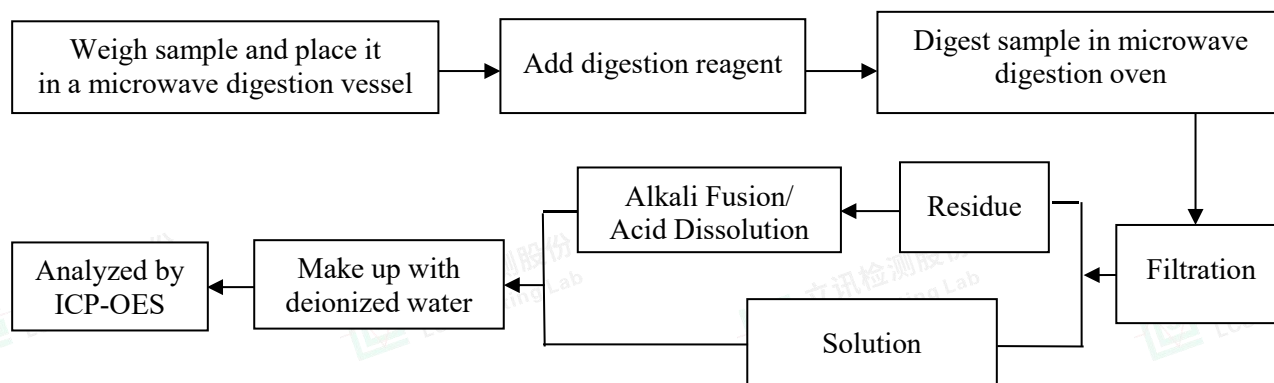


## Test Process

### 1. Lead(Pb) & Cadmium(Cd): IEC 62321-5:2013

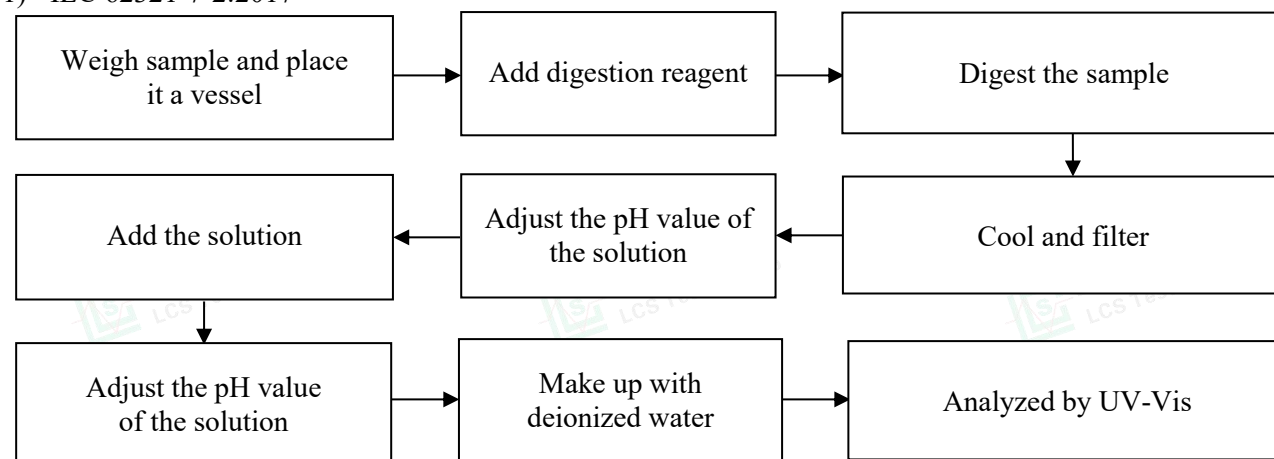


### 2. Mercury(Hg): IEC 62321-4:2013+AMD1:2017 CSV



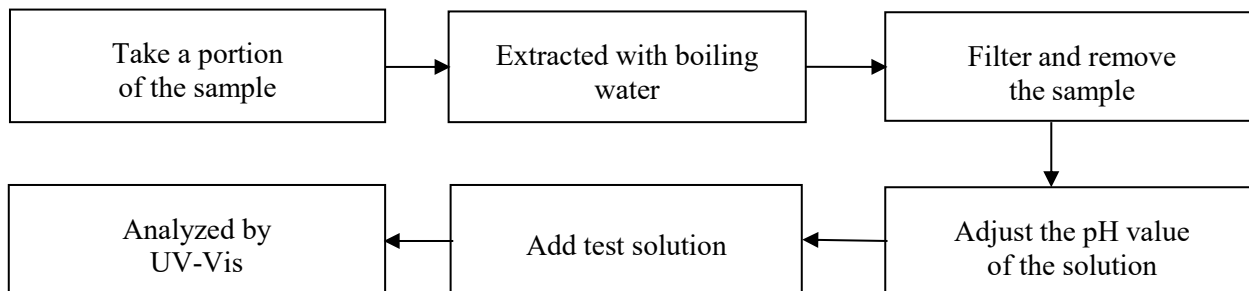
### 3. Hexavalent Chromium(Cr(VI))

#### 1) IEC 62321-7-2:2017

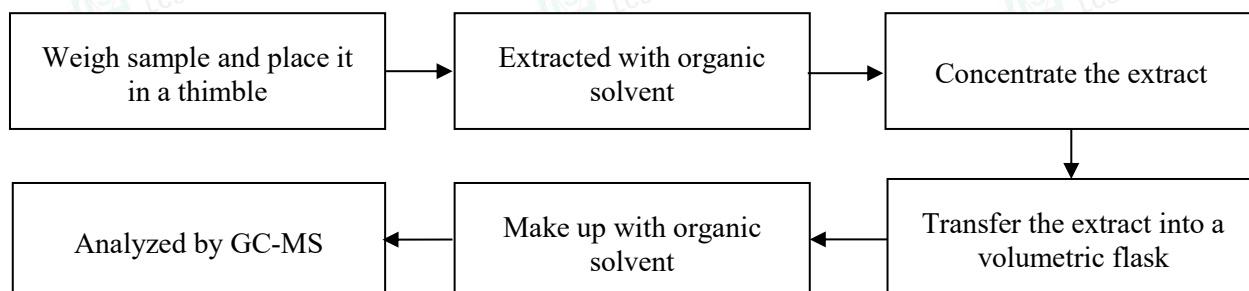




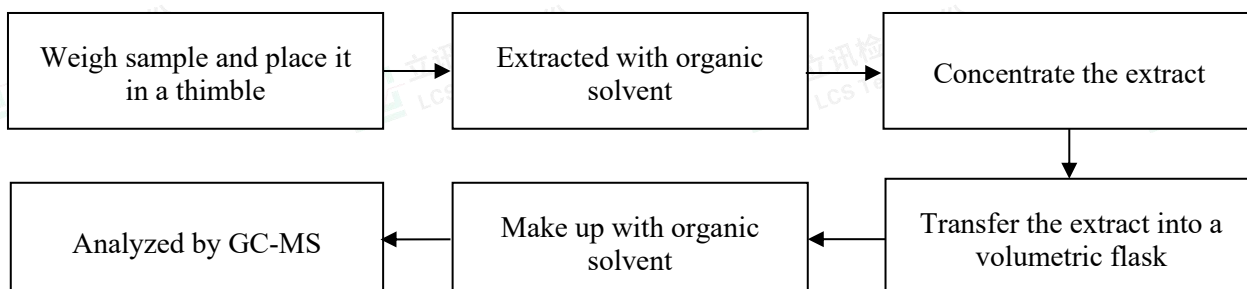
## 2) IEC 62321-7-1:2015



## 4. Polybrominated Biphenyls(PBBs) &amp; Polybrominated Diphenyl Ethers(PBDEs) : IEC 62321-6:2015

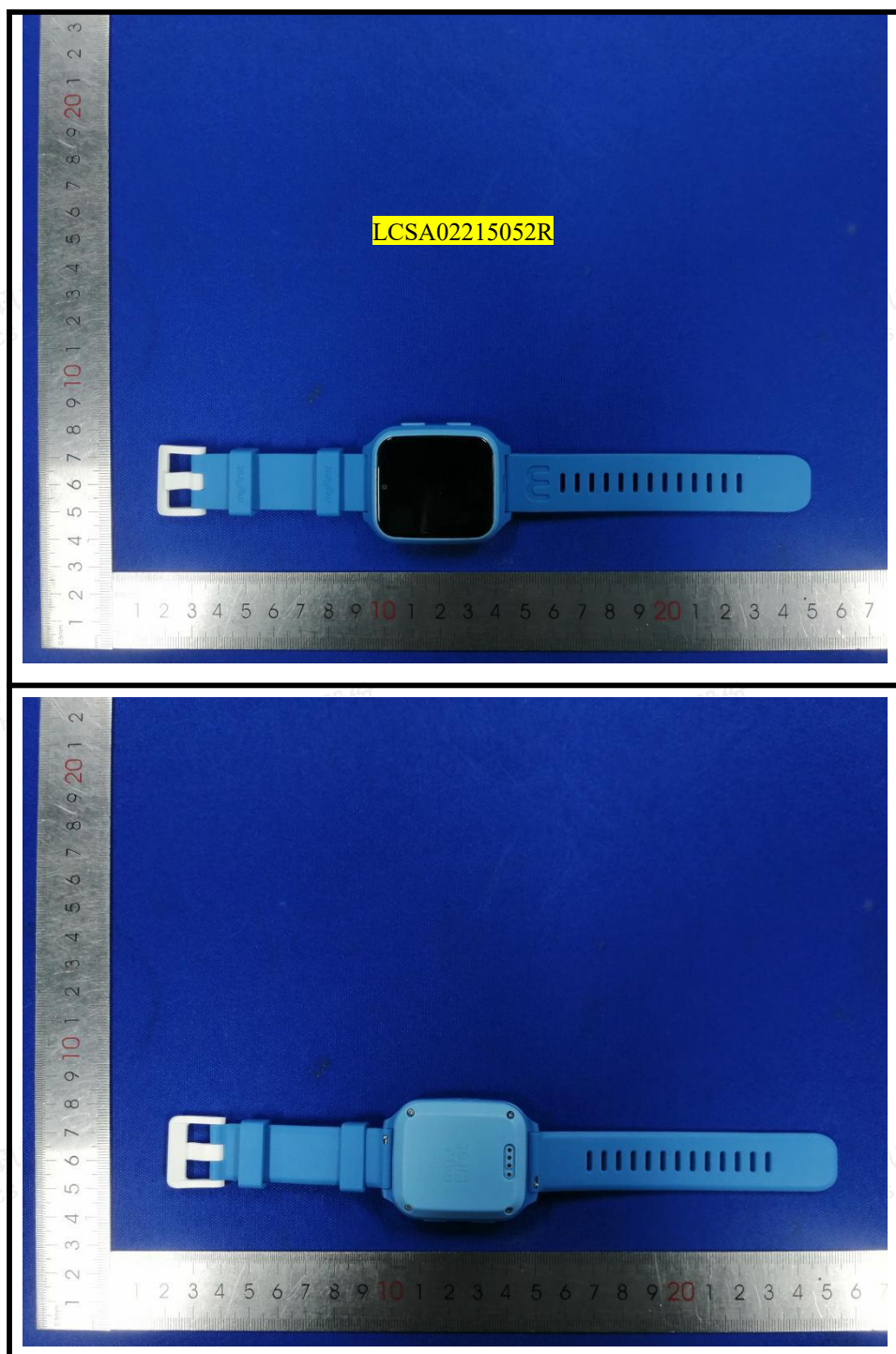


## 5. Phthalates(DBP, BBP, DEHP &amp; DIBP) : IEC 62321-8:2017

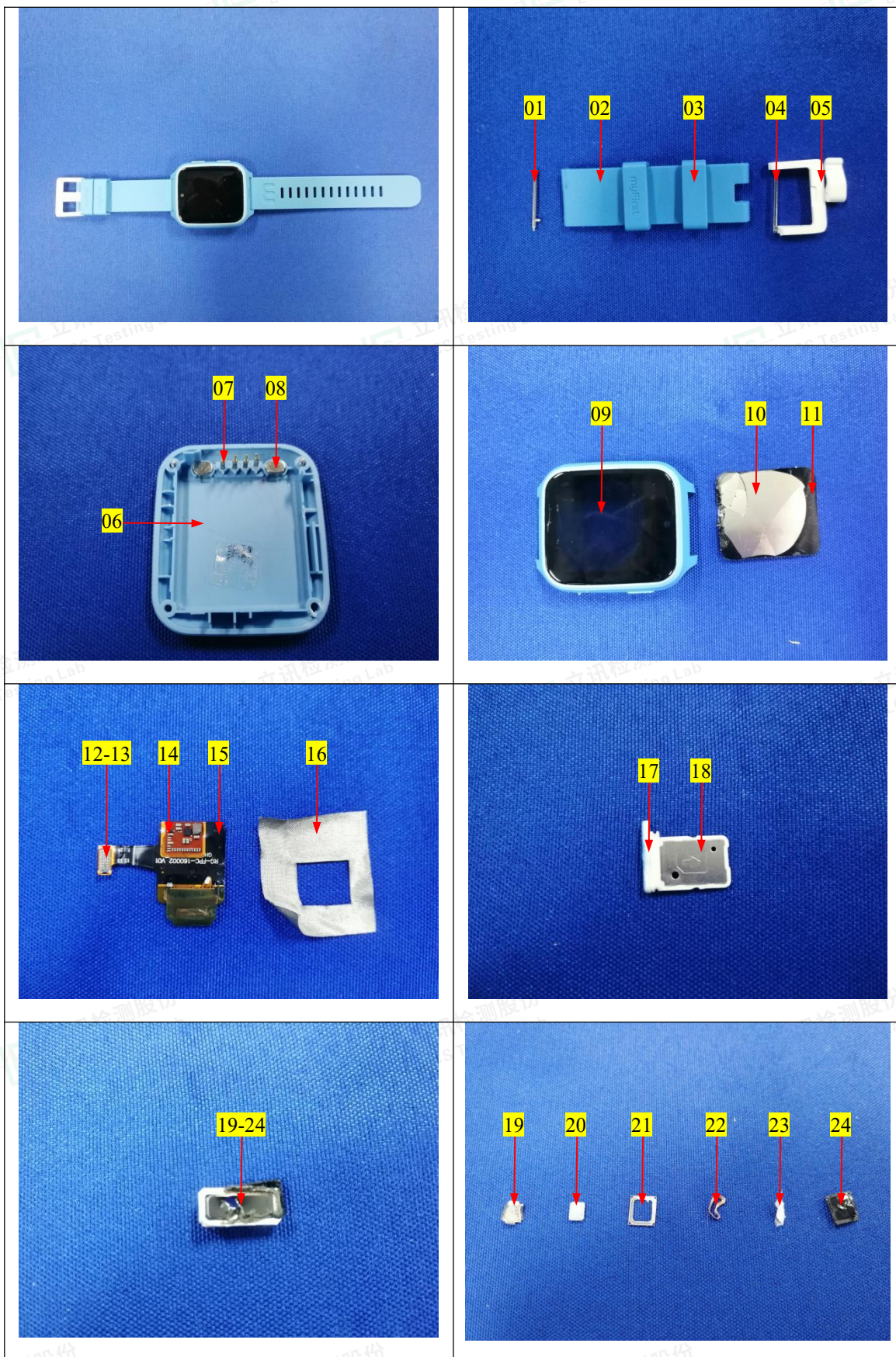




## The photo(s) of the sample





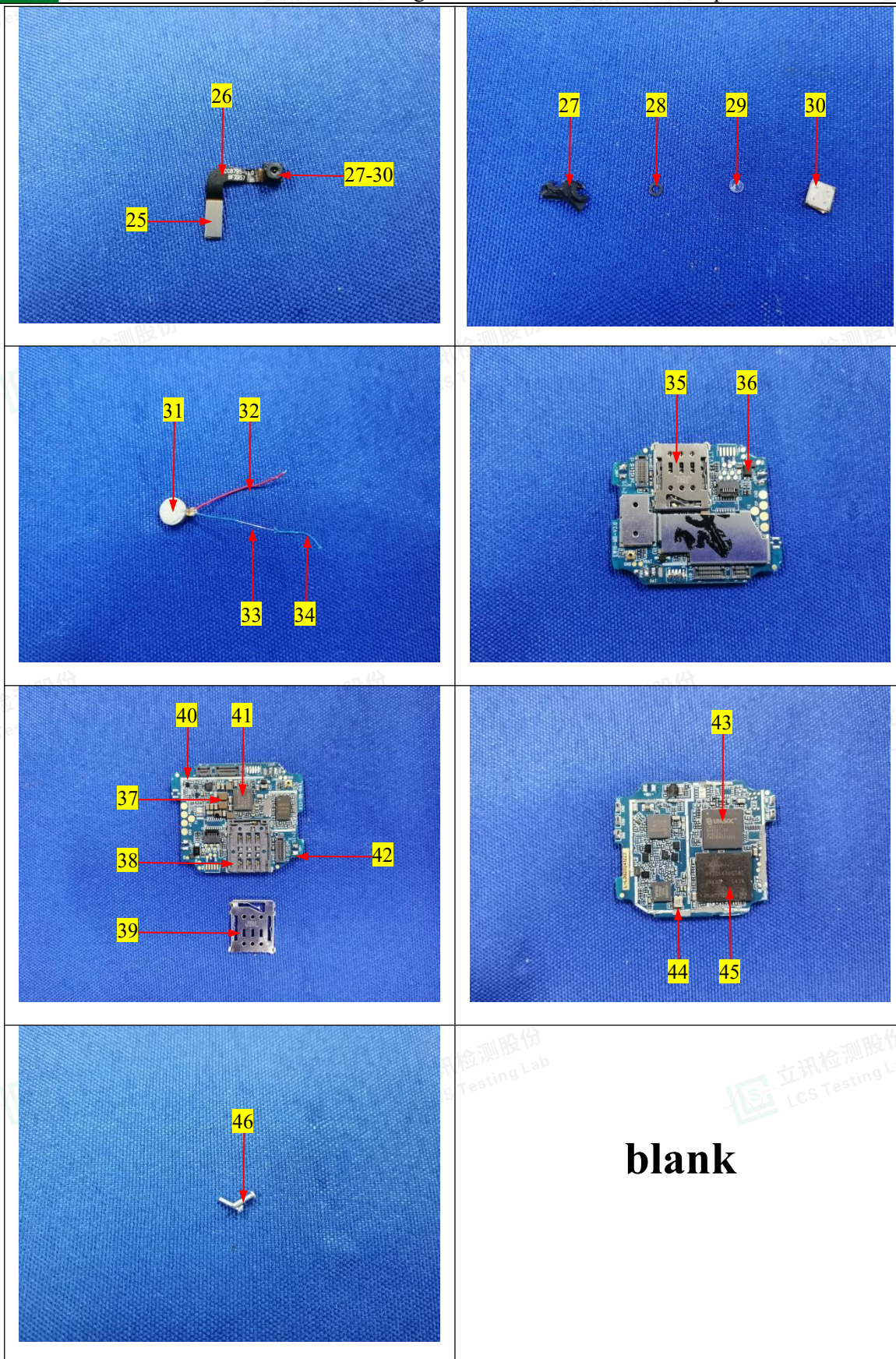


TRF-4-R-027 A/0



Shenzhen LCS Compliance Testing Laboratory Ltd.  
Add: 901, No.40 Building, Xialang Industrial Zone, Heshuikou Community, Matian Street, Guangming District, Shenzhen, Guangdong, China  
Tel: +(86) 0755-82591330 | E-mail: webmaster@lcs-cert.com | Web: www.lcs-cert.com  
Scan code to check authenticity





blank



**Statement:**

1. The test report is invalid without the signature of the approver and the special seal for the company's report;
2. The company name, address and sample information shown on the report were provided by the applicant who should be responsible for the authenticity which are not verified by LCS;
3. The test results in this report are only responsible for the tested samples;
4. Without written approval of LCS, this report can't be reproduced except in full;
5. In case of any discrepancy between the corresponding Chinese and English contents in the test report, the Chinese version shall prevail.

\*\*\* End of Report \*\*\*

